

Environmental Impact Assessment



The Procedure

Environmental Impact Assessment (EIA) requires a comprehensive analysis of the likely significant effects of a project upon the environment including a description of:-

- the project
- the existing environment
- alternatives considered
- impacts and effects
- mitigation measures

Consultation with affected parties, statutory environmental bodies and local authorities plays a very important part.

Data from the assessment is fed back into the project design to reduce or offset adverse impacts.

The completed EIA is published in an Environmental Statement, including a Non Technical Summary.



Our Services

- Screening and Scoping
- Consultations
- Option appraisal
- Baseline surveys
- Assessment of impacts and effects
- Environmental design
- Environmental Statements
- Management Plans
- Public Inquiries
- Third party review
- Planning applications
- Visual aids and photomontage

The Environmental Team

EIA is a diverse and complex process and requires an effective and experienced multidisciplinary team.

Moore Environment has a proven record of successful delivery of EIA's managing the combined expertise of a well established network of leading independent companies.

The environmental information required to inform screening and scoping opinions is also prepared by the company.

Case Studies

M1 Junction 19 Improvement



Task: Comparative Environmental Assessment of options, scoping, environmental master plan, EIA and ES publication.

Clients: Highways Agency, Skanska and Jacobs.

Project: Improvement of strategic motorway junction.

Key issues:

- noise and visual impact for nearby villages
- the River Avon and flood plain, protected species
- rich archaeological heritage
- access for vulnerable users and local traffic
- loss of agricultural land
- materials, waste management and disruption due to construction

Windmill Road Depot



Task: Provision of environmental data to support a screening opinion that EIA is not required.

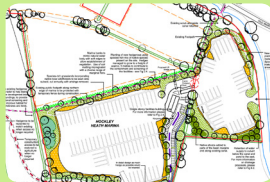
Client: Cassidy Group.

Project: 76 new dwellings on a derelict brownfield site in Coventry.

Key issues:

- historic landfill with contamination and risk of gas migration
- River Sowe, site of importance for nature conservation and floodplain
- site is in a residential area with 65 adjacent dwellings

Hockley Heath Marina



Task: Scoping, environmental master plan, EIA and ES publication.

Clients: Landowner, supported by GJP Marina Developments Ltd.

Project: Canal marina with 208 berths, total site area of 13 hectares.

Key issues:

- located within Green Belt
- surface water run-off and water quality
- landscape character and visual impact for nearby dwellings
- loss of hedgerows, impacts for bats and nesting birds
- potential nuisance for nearby properties during construction

A5117 Deeside Park Junctions Improvement



Task: Optioneering, Scoping, environmental master plan, EIA and ES publication.

Clients: Highways Agency and Carillion.

Project: Highway improvement to strategic Trans-European Network.

Key issues:

- noise and visual impact for adjacent dwellings and Shotwick Village
- Appropriate Assessment under the Habitats Regulations required for Natura 2000 sites in the Dee Estuary
- protected species including great crested newts
- historic landscape of Shotwick Deer Park
- loss of agricultural land
- disruption due to construction

www.moore-environment.co.uk

Moore Environment

Griffin House
9 Coventry Road
Coleshill
Birmingham
B46 3BB

T: 01675 466877

F: 01675 466899

mail@moore-environment.co.uk