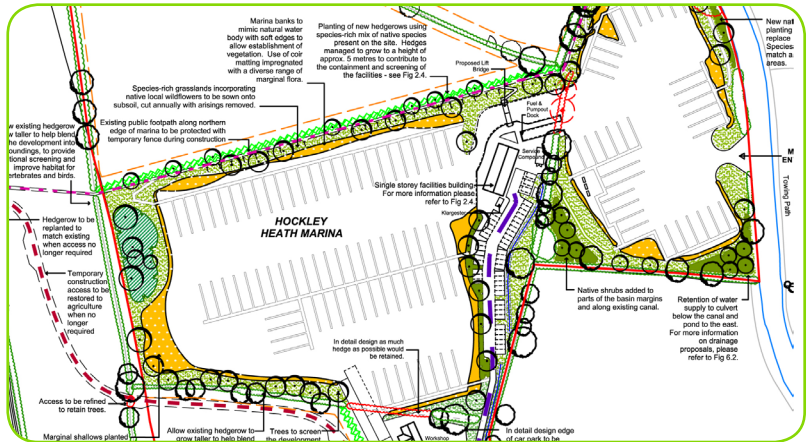


Environmental Design



Environmental assessment and design is an iterative process. Data from the assessment should be fed back into the proposals to avoid or reduce adverse impacts.

Mitigation measures are an integral part of the proposals and are presented on an environmental master plan.



Master plan, Hockley Heath Marina

As designers and coordinators of environmental assessments, Moore Environment have a clear understanding of how far sensitive design can protect or enhance the environment.

Working closely with their team of environmental assessors, the company has particular experience in the design and implementation of:-

- habitat creation including wetlands and species-rich grasslands on low nutrient soils, biodiversity roofs and greenwalls
- landscape measures including trees, shrubs and hedgerows from local provenance sources
- sustainable drainage, including swales and ponds to attenuate and treat run-off
- noise attenuation including vertical barriers, mounding and sound insulation
- archeological evaluation and mitigation including trial trenching, controlled strip map and record and watching briefs
- agricultural restoration of land required for temporary works or earth shaping
- environmental management plans to control site operations during construction and ensure that commitments set out in the Environmental Statement are met.

Moore Environment - responding to your needs



Green wall



Roadside Woodland Planting



Clear noise barrier



Green roof

The company is experienced in:-

- detailed design, specification and the production of contract documents
- tendering and contract management
- site supervision of capital and aftercare works.



Project Specific Features

Skills Academy Birmingham



- In order to enhance the species diversity of the site, wildlife nesting boxes were installed on walls, within the garden space and on the building roof. Target species included bats, blue tits, sparrows, bumblebee, masonry bee, ladybird and lacewing.
- The scheme also featured a vertical garden of sedum mat wall cladding interplanted with native wildflowers, climbing plants on an extensive trellis system and living willow fences.

A5117 Deeside



- This project included the detailed design of fourteen ponds to produce suitable habitat for great crested newt and lesser silver diving beetle
- Archaeological investigations were carried out for a medieval deer park and ancient track ways
- Noise insulation was required for adjacent dwellings
- Wet woodland was created from translocated soils
- A soil management plan was used to aid implementation of habitat creation and agricultural restoration

Hodnet Bypass



- Low nutrient soils were used for wetlands and species rich grassland
- Trees, shrubs and hedgerows were grown from local seed collections to ensure true local provenance
- Enhancement of River Tern was carried out including ox-bow pools and shallow margins
- Four hectares of wetland habitat utilised the natural ground water of the Tern Valley and included a variety of pond sizes and water depths to enhance biodiversity
- Extensive noise barriers were installed.
- Side slopes were returned to agricultural use
- Four drainage ponds were designed to attenuate and treat run-off

West Midlands Fire and Rescue Authority's HQ Birmingham



- This biodiversity roof was installed utilising recycled crushed brick and concrete laid at varying depths, scattered with a few small piles of logs, reminiscent of typical brownfield sites.
- Such an environment provides microhabitats for a number of invertebrates, grasses and wildflower species and is attractive to bird species such as the rare Black Redstart.

www.moore-environment.co.uk

Moore Environment

Griffin House
9 Coventry Road
Coleshill
Birmingham
B46 3BB

T: 01675 466877

F: 01675 466899

mail@moore-environment.co.uk